

Technical drawing of a wooden cabinet with a fire extinguisher compartment. The cabinet is shown in a perspective view. The main body is made of light-colored wood. On the left, there is a glass door with a silver handle. To the right of the door is a compartment for a fire extinguisher. This compartment is labeled "Löschwasserentnahmeschrank mit Feuerlöscher bauseits" and "1.2.05 Feuerlöscher". The compartment is 22cm deep, 60cm wide, and 70cm high. The overall width of the cabinet is 405cm, and the depth is 285cm. The drawing includes dimensions for the cabinet's width (405), depth (285), and the fire extinguisher compartment (22cm deep, 60cm wide, 70cm high). There is also a dimension 'x' for the distance between the door and the compartment.

Decke d. 1.0G

UK Rohdecke

OK Wandverkleidung

UK Abhangdecke

ca. 2,60

2,70

lichte Raumhöhe 1.OG: 2,70

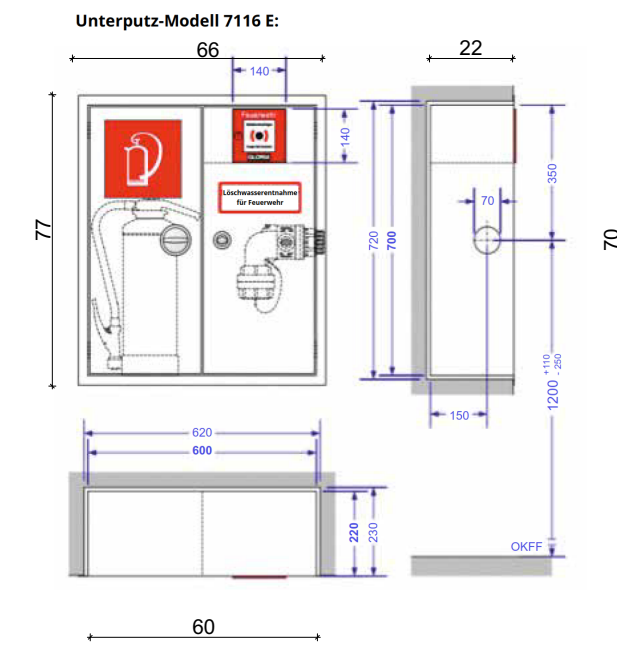
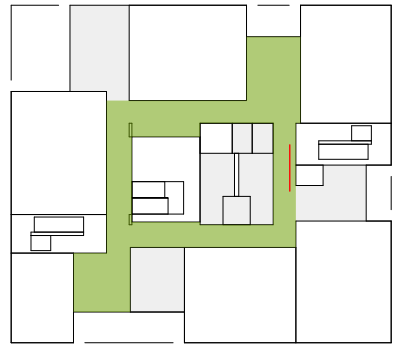
lichte Raumhöhe 2.OG: 2,60

OK FFB

6

TR Ost 1.42

Flur Ost



Technical drawing of a window frame assembly. The drawing shows a cross-section of the window frame and its connection to the wall. Key components and dimensions include:

- Window Frame:** Labeled "T-1421" on the left side.
- Wall Structure:** Labeled "TR Ost 1.42" on the right side.
- Dimensions:**
 - Horizontal dimensions: 62 (total width of the frame section), 60 (width of the opening), and 3 (width of the side flange).
 - Vertical dimensions: 22 (height of the frame section) and 22 (height of the opening).
- Labels:** "Flur Ost" (Hallway East) is labeled on the right side, indicating the location of the window.
- Annotations:** A dashed line indicates the location of the window frame relative to the wall structure.

Technical drawing of a cabinet door assembly. The drawing shows a side view of a door with a hatched pattern. The door is composed of a main panel and a smaller panel below it. The main panel has a height of 18 and a width of 60. The smaller panel has a height of 19 and a width of 3. The total height of the door is 23. The total width of the door is 60. The text 'gesamte Schranklänge' is written below the door, indicating the total cabinet length.

<h1>SCHULZENTRUM HELDMANSKAMP</h1> <h2>ERWEITERUNG REALSCHULE LEMGO</h2>			
<h3>hautau . winterhalter : architekten</h3>			
Lessingstraße 3 79100 Freiburg i. Brsg. T 0761 756 77 0			
DATUM	AUSGABEDATUM	GEZ. / GEPR.	FORMAT
04.02.2026	04.02.2026		420mm x 279mm
PROJEKTNR.	PHASE	MASSTAB	ZEICH.NR. / IND.
2210	WP	1:20, 1:50, 1:5	4191_3
PLAN			
<h3>Löschwasserentnahmeschrank Ost Detail</h3>			
PLANINHALT			